

# WEEKLY REPORT

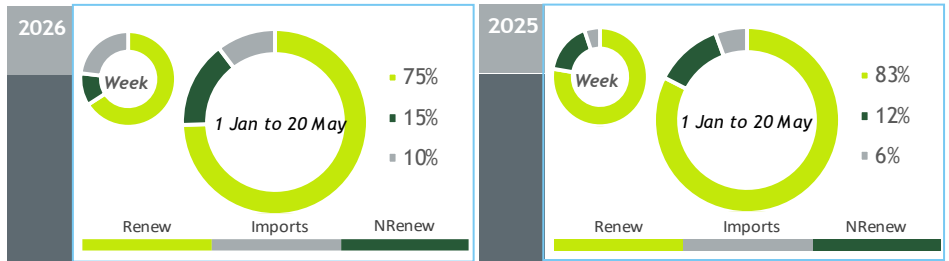
## Electricity System

### GENERATION BALANCE

14 MAY to 20 MAY

[GWh]	WEEK 20		YEAR	
	2026	26-25	2026	26/25
CONSUMPTION	944	25	21 402	3.6%
<i>corrected by temperature</i>	944	24	21 707	3.4%
TOTAL GENERATION	879	-93	21 221	0%
THERMAL	157	-55	4 328	21%
HYDRO	330	-107	8 832	-11%
WIND	225	67	6 084	2%
SOLAR	167	2	1 978	6%
WAVE	0	0	0	-
IMPORT BALANCE	228	177	2 255	93%
PUMPING	163	60	2 075	14%
PEAK LOAD [MW]				
CONSUMPTION	7 243	207	10 261	9%
day/month/hour	19/05 21.00		20/01 19.45	
GENERATION	8 564	-747	12 215	5%
day/month/hour	14/05 21.00		26/01 19.30	

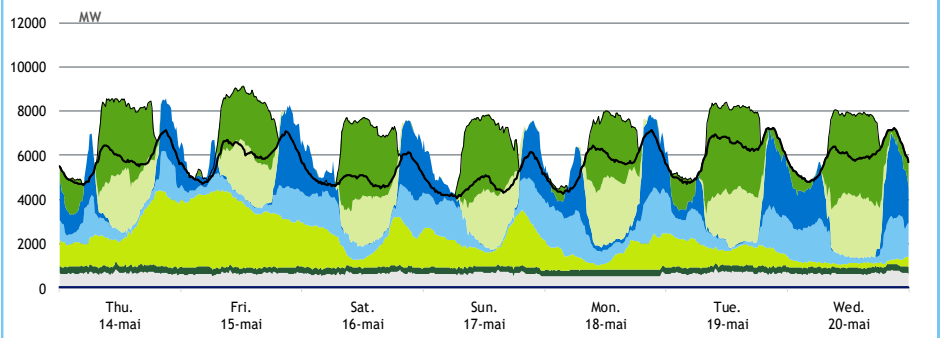
Values referred to net generation



### HYDRAULICITY

WEEKLY INFLOW [GWh]	2026	2025	Average
TOTAL	224	377	227
RUN-OF-RIVER	148	218	118
RESERVOIRS	59	123	88
SMALL HYDRO (generation)	17	37	22
HYDRO STORAGE [GWh (% of maximum)]	2 741 (84%)	3 030 (93%)	2 466 (76%)

### LOAD DIAGRAMS

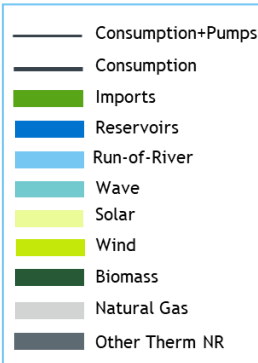


# 2026

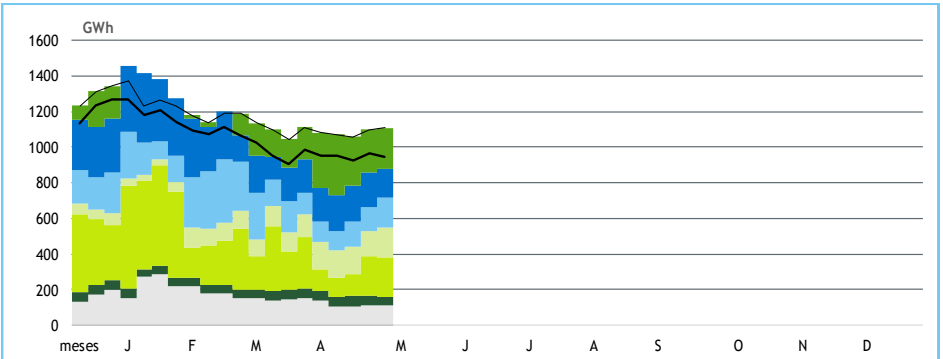
## WEEK

# 20

provisional values



### GENERATION BREAKDOWN



**GENERATION [GWh]**

WEEK 20

YEAR

	Thu.	Fri.	Sat.	Sun.	Mon.	Tue.	Wed.	2026	26/25	2026	26/25
<b>CONSUMPTION</b>	<b>138</b>	<b>143</b>	<b>122</b>	<b>115</b>	<b>136</b>	<b>147</b>	<b>142</b>	<b>944</b>	<b>2.7%</b>	<b>21 402</b>	<b>3.6%</b>
<b>Renewable Generation</b>	<b>98</b>	<b>116</b>	<b>88</b>	<b>90</b>	<b>98</b>	<b>81</b>	<b>79</b>	<b>650</b>	<b>-12%</b>	<b>16 264</b>	<b>-6%</b>
Reservoirs	5	4	3	2	12	6	13	45	-59%	3 302	5%
Run-of-river	15	12	23	23	29	20	24	147	-32%	3 185	-29%
Small Hydro	3	3	3	2	2	2	2	17	-53%	699	-24%
Wind	44	68	32	33	21	23	5	225	42%	6 084	2%
Biomass	7	7	7	7	7	7	7	48	-3%	1 016	-4%
Solar	23	22	20	23	28	24	28	167	1%	1 978	6%
Wave	0	0	0	0	0	0	0	0	-	0	-
<b>Non-Renewable Generation</b>	<b>16</b>	<b>16</b>	<b>16</b>	<b>16</b>	<b>13</b>	<b>16</b>	<b>16</b>	<b>109</b>	<b>-33%</b>	<b>3 312</b>	<b>32%</b>
Natural Gas - Combined Cycle	12	12	12	12	9	13	12	82	-39%	2 883	48%
Natural Gas - Cogeneration	3	3	3	3	3	3	3	22	-2%	342	-30%
Other Thermal	1	1	1	1	1	1	1	5	-10%	87	17%
<b>Import Balance</b>	<b>34</b>	<b>21</b>	<b>26</b>	<b>24</b>	<b>23</b>	<b>52</b>	<b>47</b>	<b>228</b>	<b>353%</b>	<b>2 255</b>	<b>93%</b>
Imports (Commercial schedules)	45	32	39	37	32	55	49	288	112%	3 855	5%
Exports (Commercial schedules)	10	11	13	13	9	3	2	61	-29%	1 614	-35%
<b>Pumped Storage Generation</b>	<b>16</b>	<b>18</b>	<b>20</b>	<b>16</b>	<b>19</b>	<b>14</b>	<b>18</b>	<b>121</b>	<b>61%</b>	<b>1 646</b>	<b>16%</b>
<b>Consumption of Pumps</b>	<b>26</b>	<b>28</b>	<b>28</b>	<b>30</b>	<b>17</b>	<b>17</b>	<b>18</b>	<b>163</b>	<b>58%</b>	<b>2 075</b>	<b>14%</b>

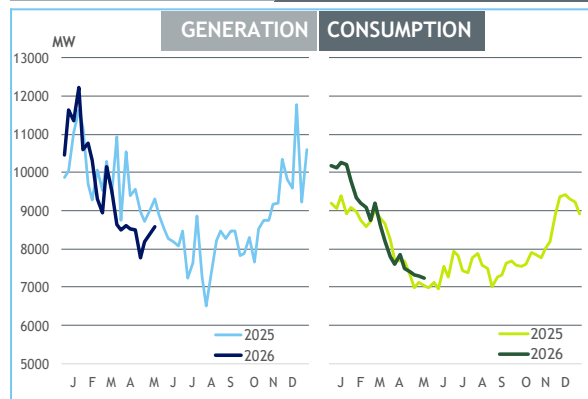
**MAXIMUM LOAD [MW]**

WEEK 20

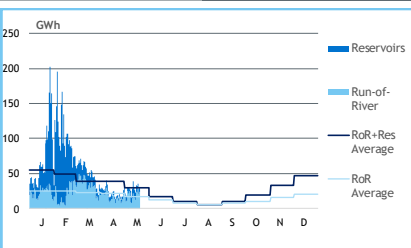
YEAR

	2026	26-25	2026	26/25
<b>CONSUMPTION</b>	<b>7 243</b>	<b>207</b>	<b>10 261</b>	<b>9%</b>
<b>GENERATION</b>	<b>8 564</b>	<b>-747</b>	<b>12 215</b>	<b>5%</b>
Hydro	5 570	-192	6 572	-6%
Small Hydro	177	-115	365	-1%
Wind	3 524	1 065	4 883	-4%
Biomass	326	-3	376	1%
Solar	3 097	132	3 283	11%
Wave	0	0	0	-
Natural Gas - Combined Cycle	694	-323	2 406	-12%
Natural Gas - Cogeneration	154	-33	212	-7%
Other Thermal	30	-3	32	0%
Imports	4 351	1 894	4 727	0%
Exports	1 935	-581	3 893	8%

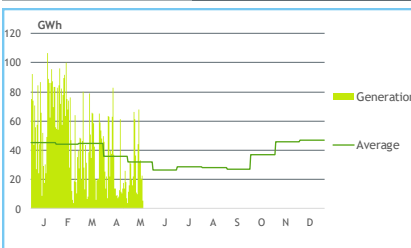
**WEEKLY PEAKS**



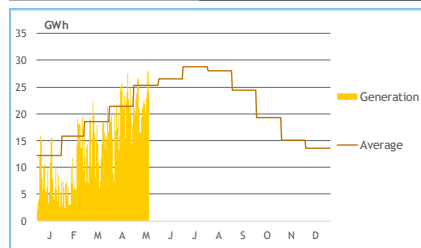
**DAILY INFLOW**



**WIND DAILY**



**SOLAR DAILY**



**HYDRAULICITY [GWh]**

	Thu.	Fri.	Sat.	Sun.	Mon.	Tue.	Wed.	Total
<b>INFLOW</b>	<b>27</b>	<b>23</b>	<b>33</b>	<b>31</b>	<b>35</b>	<b>28</b>	<b>30</b>	<b>207</b>
Run-of-River	16	13	24	23	29	20	24	148
Reservoirs	11	10	9	8	6	8	6	59
<b>SPILLAGES</b>	<b>1</b>	<b>1</b>	<b>1</b>	<b>1</b>	<b>1</b>	<b>1</b>	<b>1</b>	<b>5</b>
<b>HYDRO STORAGE</b>	<b>2 734</b>	<b>2 743</b>	<b>2 751</b>	<b>2 764</b>	<b>2 752</b>	<b>2 752</b>	<b>2 741</b>	

**STORAGE**

