

WEEKLY REPORT

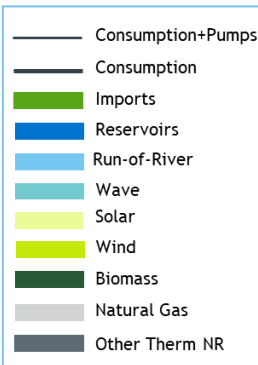
Electricity System

2025

WEEK

14

provisional values

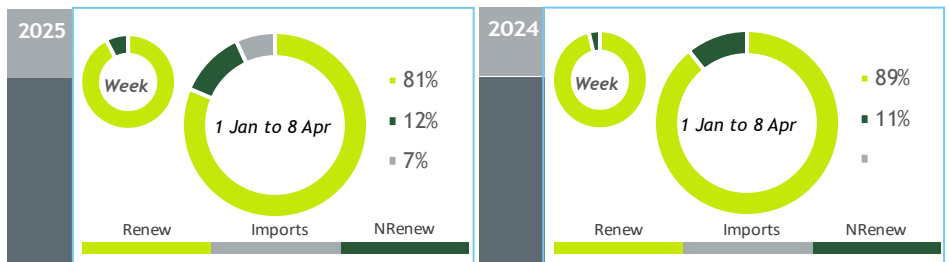


GENERATION BALANCE

02 APR to 08 APR

[GWh]	WEEK 14		YEAR	
	2025	25-24	2025	25/24
CONSUMPTION	972	-11	15 183	2.5%
<i>corrected by temperature</i>	996	6	15 479	1.2%
TOTAL GENERATION	1 097	-59	15 356	-6%
THERMAL	132	27	2 572	1%
HYDRO	556	-15	7 128	-13%
WIND	321	-87	4 535	-6%
SOLAR	88	15	1 120	29%
WAVE	0	0	0	-
IMPORT BALANCE	-15	83	1 061	+/-
PUMPING	110	35	1 234	-5%
PEAK LOAD [MW]				
CONSUMPTION	7 702	-612	9 382	-4%
day/month/hour	03/04 20.15		15/01 19.45	
GENERATION	10 531	-47	11 633	-4%
day/month/hour	04/04 20.15		27/01 19.30	

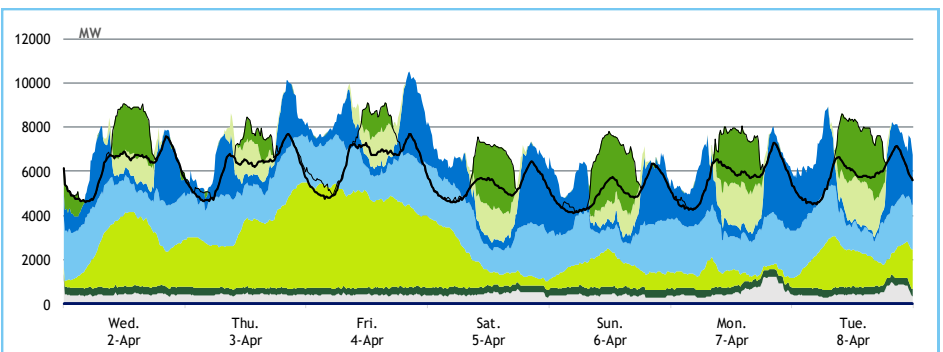
Values referred to net generation



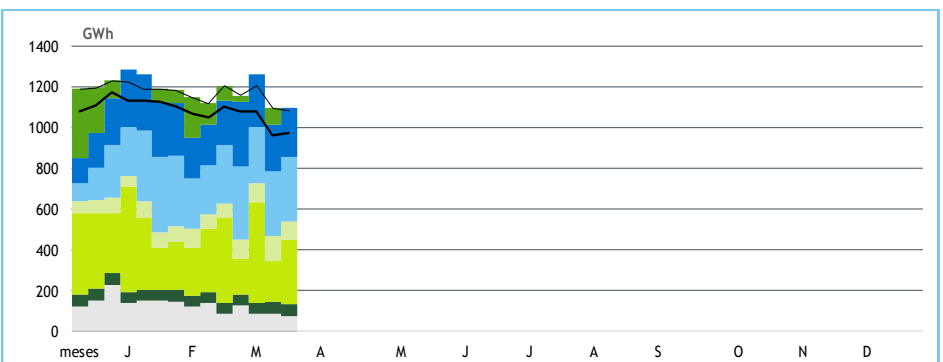
HYDRAULICITY

WEEKLY INFLOW [GWh]	2025	2024	Average
TOTAL	496	652	305
RUN-OF-RIVER	271	253	150
RESERVOIRS	178	344	125
SMALL HYDRO (generation)	46	55	30
HYDRO STORAGE [GWh (% of maximum)]	2 825 (87%)	3 153 (97%)	2 282 (70%)

LOAD DIAGRAMS



GENERATION BREAKDOWN



GENERATION [GWh]

WEEK 14

YEAR

	Wed.	Thu.	Fri.	Sat.	Sun.	Mon.	Tue.	2025	25/24	2025	25/24
CONSUMPTION	147	147	153	128	121	137	139	972	-1.1%	15 183	2.5%
Renewable Generation	129	151	180	118	102	113	123	916	-13%	12 566	-8%
Reservoirs	17	17	17	21	19	24	20	135	-32%	2 302	-24%
Run-of-river	39	40	39	38	34	42	38	270	7%	3 201	-5%
Small Hydro	6	6	6	8	7	7	6	46	-16%	648	-12%
Wind	49	69	99	31	24	14	34	321	-21%	4 535	-6%
Biomass	8	7	8	8	8	8	8	55	-12%	760	-14%
Solar	9	11	12	13	9	17	17	88	21%	1 120	29%
Wave	0	0	0	0	0	0	0	0	-	0	-
Non-Renewable Generation	10	10	10	11	9	14	12	76	85%	1 812	9%
Natural Gas - Combined Cycle	6	6	6	7	6	10	8	50	>	1 411	24%
Natural Gas - Cogeneration	4	4	3	3	3	4	3	24	-19%	344	-23%
Other Thermal	0	0	0	0	0	0	0	3	-42%	57	-18%
Import Balance	10	-15	-35	0	12	10	2	-15	-85%	1 061	+/-
Imports (Commercial schedules)	26	11	10	26	33	35	35	177	25%	2 807	37%
Exports (Commercial schedules)	16	26	45	26	22	25	32	191	-20%	1 744	-25%
Pumped Storage Generation	14	12	13	13	17	16	19	105	60%	978	-6%
Consumption of Pumps	16	11	16	14	19	15	18	110	47%	1 234	-5%

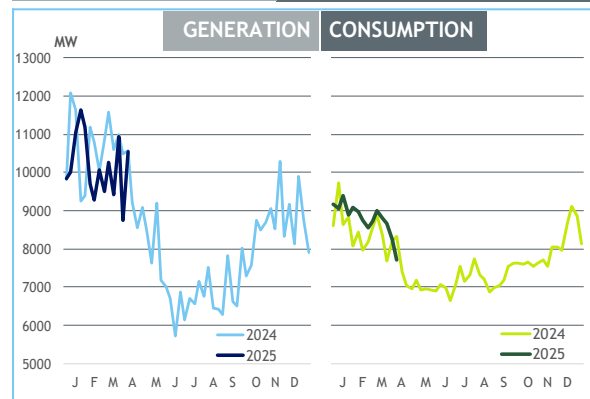
MAXIMUM LOAD [MW]

WEEK 14

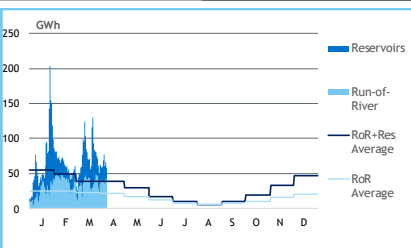
YEAR

	2025	25-24	2025	25/24
CONSUMPTION	7 702	-612	9 382	-4%
GENERATION	10 531	-47	11 633	-4%
Hydro	5 908	-425	6 962	1%
Small Hydro	358	-15	369	-1%
Wind	4 789	38	5 078	1%
Biomass	361	-48	377	-11%
Solar	2 007	12	2 837	41%
Wave	0	0	0	-
Natural Gas - Combined Cycle	1 035	444	2 722	-20%
Natural Gas - Cogeneration	764	523	764	123%
Other Thermal	20	-12	35	0%
Imports	3 172	173	4 711	3%
Exports	3 604	655	3 607	2%

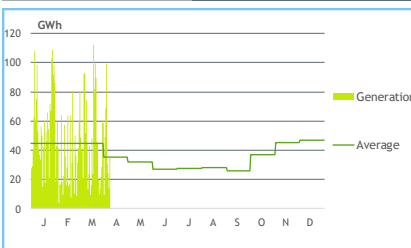
WEEKLY PEAKS



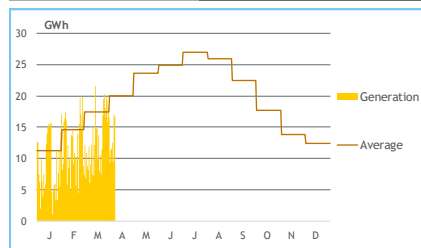
DAILY INFLOW



WIND DAILY



SOLAR DAILY



HYDRAULICITY [GWh]

	Wed.	Thu.	Fri.	Sat.	Sun.	Mon.	Tue.	Total
INFLOW	59	59	69	77	61	66	59	449
Run-of-River	39	41	39	38	34	43	38	271
Reservoirs	19	19	30	39	27	23	21	178
SPILLAGES	1	1	1	1	2	1	2	10
HYDRO STORAGE	2 810	2 807	2 818	2 833	2 837	2 832	2 825	

STORAGE

