

WEEKLY REPORT

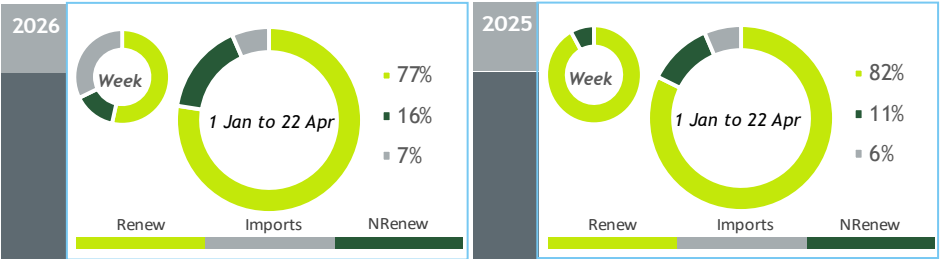
Electricity System

GENERATION BALANCE

16 APR to 22 APR

[GWh]	WEEK 16		YEAR	
	2026	26-25	2026	26/25
CONSUMPTION	950	0	17 621	3.0%
<i>corrected by temperature</i>	967	17	17 912	2.8%
TOTAL GENERATION	765	-329	17 988	3%
THERMAL	194	60	3 685	30%
HYDRO	301	-197	7 530	-7%
WIND	117	-251	5 415	5%
SOLAR	153	58	1 358	3%
WAVE	0	0	0	-
IMPORT BALANCE	313	351	1 167	4%
PUMPING	129	22	1 533	6%
PEAK LOAD [MW]				
CONSUMPTION	7 490	-189	10 263	9%
day/month/hour	21/04 20.30		20/01 19.45	
GENERATION	8 495	-1058	12 218	5%
day/month/hour	21/04 06.45		26/01 19.30	

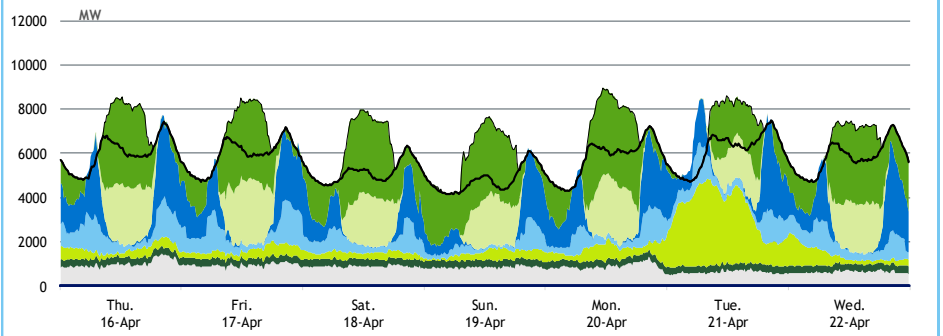
Values referred to net generation



HYDRAULICITY

WEEKLY INFLOW [GWh]	2026	2025	Average
TOTAL	148	523	305
RUN-OF-RIVER	104	199	150
RESERVOIRS	30	274	125
SMALL HYDRO (generation)	15	50	30
HYDRO STORAGE [GWh (% of maximum)]	2 875 (88%)	2 932 (90%)	2 409 (74%)

LOAD DIAGRAMS

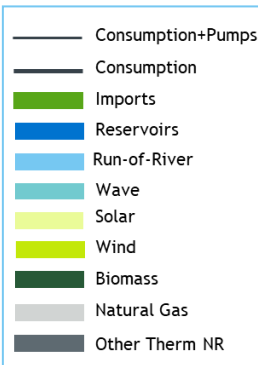


2026

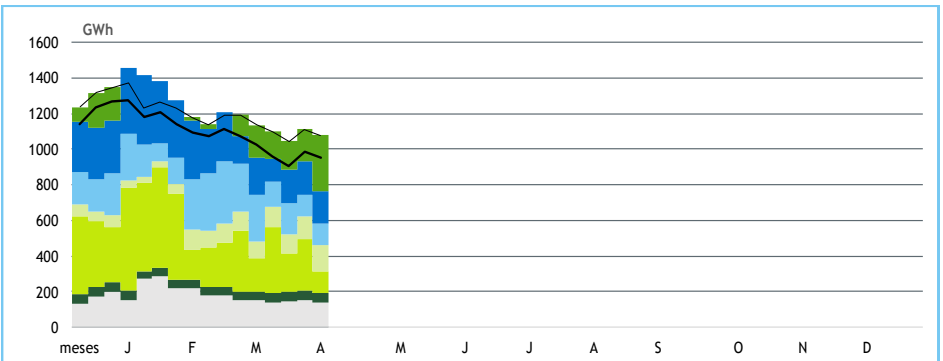
WEEK

16

provisional values



GENERATION BREAKDOWN



GENERATION [GWh]

WEEK 16

YEAR

	Thu.	Fri.	Sat.	Sun.	Mon.	Tue.	Wed.	2026	26/25	2026	26/25
CONSUMPTION	144	142	124	115	138	147	140	950	0.0%	17 621	3.0%
Renewable Generation	77	79	59	51	65	115	73	520	-44%	13 895	-3%
Reservoirs	16	16	7	4	6	12	16	77	-51%	2 979	15%
Run-of-river	19	19	13	8	13	16	15	103	-48%	2 702	-26%
Small Hydro	2	2	2	2	2	2	2	15	-71%	633	-15%
Wind	9	9	7	8	12	61	11	117	-68%	5 415	5%
Biomass	8	8	8	8	8	8	8	55	2%	809	-7%
Solar	24	26	21	21	23	16	22	153	62%	1 358	3%
Wave	0	0	0	0	0	0	0	0	-	0	-
Non-Renewable Generation	24	23	21	20	21	15	15	140	73%	2 876	47%
Natural Gas - Combined Cycle	22	20	19	18	19	13	13	124	116%	2 531	67%
Natural Gas - Cogeneration	2	2	2	1	2	2	2	12	-41%	271	-30%
Other Thermal	1	1	1	1	1	1	1	4	17%	74	21%
Import Balance	41	43	54	54	51	19	52	313	+/-	1 167	4%
Imports (Commercial schedules)	44	44	55	56	56	29	57	340	109%	2 588	-18%
Exports (Commercial schedules)	3	2	1	2	5	10	4	27	-86%	1 432	-30%
Pumped Storage Generation	18	14	13	14	21	15	12	106	16%	1 216	7%
Consumption of Pumps	17	16	23	23	20	17	13	129	21%	1 533	6%

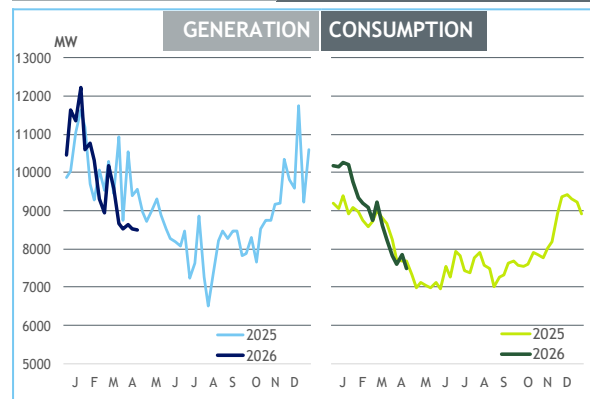
MAXIMUM LOAD [MW]

WEEK 16

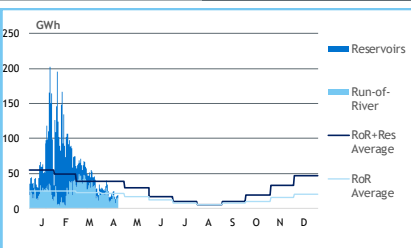
YEAR

	2026	26-25	2026	26/25
CONSUMPTION	7 490	-189	10 263	9%
GENERATION	8 495	-1 058	12 218	5%
Hydro	5 768	-402	6 572	-6%
Small Hydro	140	-225	365	-1%
Wind	3 959	-799	4 883	-4%
Biomass	345	-12	381	1%
Solar	2 967	265	2 971	4%
Wave	0	0	0	-
Natural Gas - Combined Cycle	1 377	-248	2 406	-12%
Natural Gas - Cogeneration	95	-82	208	-6%
Other Thermal	34	8	34	0%
Imports	3 980	-226	4 727	0%
Exports	3 105	-65	3 893	8%

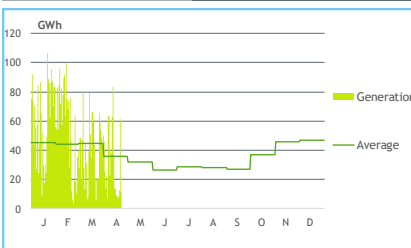
WEEKLY PEAKS



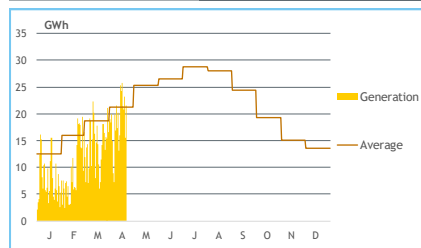
DAILY INFLOW



WIND DAILY



SOLAR DAILY



HYDRAULICITY [GWh]

	Thu.	Fri.	Sat.	Sun.	Mon.	Tue.	Wed.	Total
INFLOW	24	25	17	13	17	18	20	134
Run-of-River	19	19	13	8	13	16	15	104
Reservoirs	5	6	4	5	4	1	5	30
SPILLAGES	1	1	1	1	1	1	1	7
HYDRO STORAGE	2 918	2 907	2 908	2 912	2 903	2 889	2 875	

STORAGE

