

WEEKLY REPORT

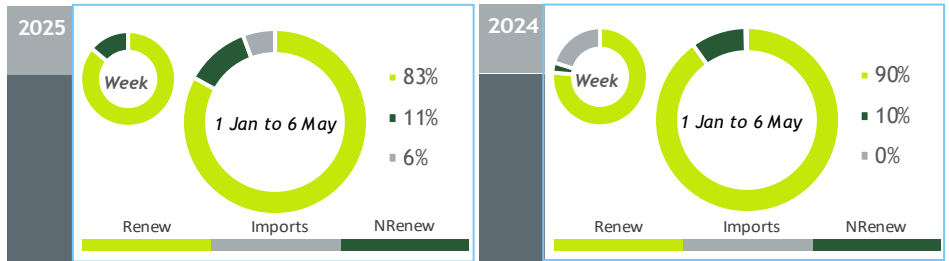
Electricity System

GENERATION BALANCE

30 APR to 06 MAY

[GWh]	WEEK 18		YEAR	
	2025	25-24	2025	25/24
CONSUMPTION	884	-44	18 793	2.0%
<i>corrected by temperature</i>	893	-31	19 117	1.0%
TOTAL GENERATION	1 017	141	19 342	-4%
THERMAL	184	86	3 150	7%
HYDRO	457	113	9 038	-11%
WIND	259	-78	5 615	-3%
SOLAR	117	20	1 539	19%
WAVE	0	0	0	-
IMPORT BALANCE	-76	-271	1 076	>
PUMPING	57	-86	1 626	-7%
PEAK LOAD [MW]				
CONSUMPTION	6 994	-169	9 381	-4%
day/month/hour	06/05 20.45		15/01 19.45	
GENERATION	8 725	240	11 632	-4%
day/month/hour	02/05 21.00		27/01 19.30	

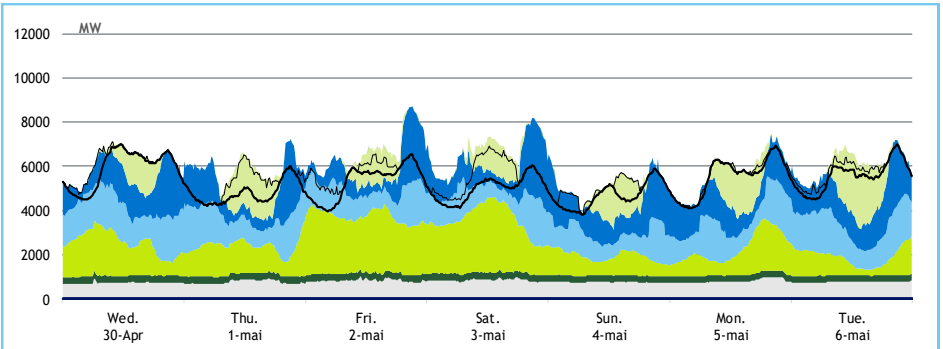
Values referred to net generation



HYDRAULICITY

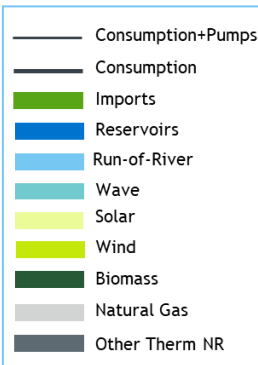
WEEKLY INFLOW [GWh]	2025	2024	Average
TOTAL	426	307	238
RUN-OF-RIVER	180	94	122
RESERVOIRS	197	179	93
SMALL HYDRO (generation)	49	34	23
HYDRO STORAGE [GWh (% of maximum)]	2 975 (92%)	2 956 (91%)	2 352 (72%)

LOAD DIAGRAMS

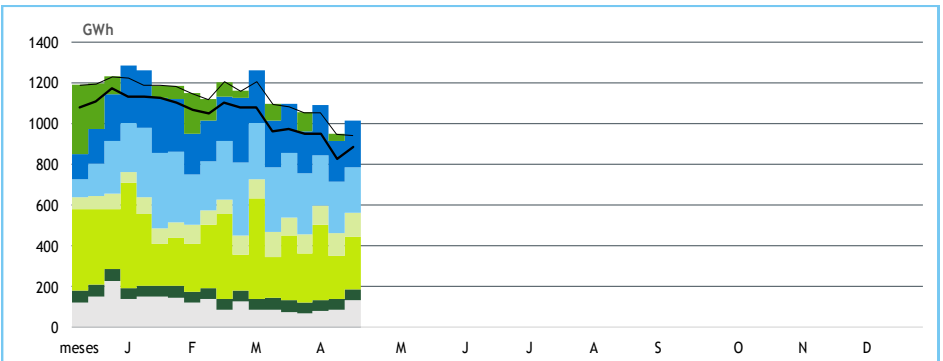


2025 WEEK 18

provisional values



GENERATION BREAKDOWN



GENERATION [GWh]

WEEK 18

YEAR

	Wed.	Thu.	Fri.	Sat.	Sun.	Mon.	Tue.	2025	25/24	2025	25/24
CONSUMPTION	142	115	128	120	112	133	134	884	-4.8%	18 793	2.0%
Renewable Generation	118	112	130	130	96	112	118	816	11%	15 875	-6%
Reservoirs	22	19	17	23	26	26	28	160	51%	2 875	-22%
Run-of-river	33	27	24	22	18	24	30	179	92%	4 043	-2%
Small Hydro	6	7	6	7	8	8	7	49	45%	832	-6%
Wind	37	31	62	58	21	29	20	259	-23%	5 615	-3%
Biomass	8	7	8	8	7	7	7	52	-21%	971	-15%
Solar	12	20	13	12	16	18	25	117	21%	1 539	19%
Wave	0	0	0	0	0	0	0	0	-	0	-
Non-Renewable Generation	17	18	20	20	18	19	18	132	317%	2 179	20%
Natural Gas - Combined Cycle	15	16	17	16	15	16	14	108	>	1 685	44%
Natural Gas - Cogeneration	2	2	2	3	3	3	3	19	-23%	421	-24%
Other Thermal	0	0	1	1	1	1	1	5	-16%	73	-19%
Import Balance	0	-15	-22	-26	-4	-3	-6	-76	-/+	1 076	>
Imports (Commercial schedules)	0	1	1	2	1	1	1	6	-98%	3 415	16%
Exports (Commercial schedules)	0	16	23	27	5	4	6	82	-1%	2 320	-20%
Pumped Storage Generation	13	11	10	10	10	6	9	70	-37%	1 289	-9%
Consumption of Pumps	6	11	10	14	8	2	6	57	-60%	1 626	-7%

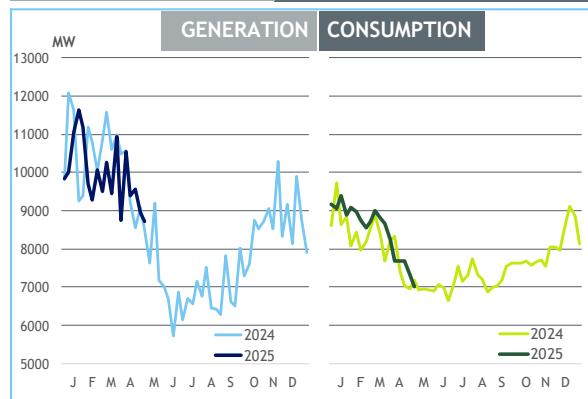
MAXIMUM LOAD [MW]

WEEK 18

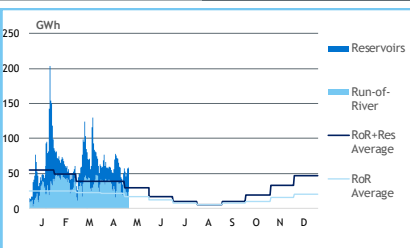
YEAR

	2025	25-24	2025	25/24
CONSUMPTION	6 994	-169	9 381	-4%
GENERATION	8 725	240	11 632	-4%
Hydro	5 412	-252	6 962	1%
Small Hydro	349	45	369	-1%
Wind	3 466	-293	5 078	1%
Biomass	341	-78	377	-11%
Solar	2 820	605	2 837	28%
Wave	0	0	0	-
Natural Gas - Combined Cycle	885	540	2 722	-20%
Natural Gas - Cogeneration	159	-46	222	-35%
Other Thermal	34	0	35	0%
Imports	94	-3 909	4 711	3%
Exports	2 222	-9	3 607	2%

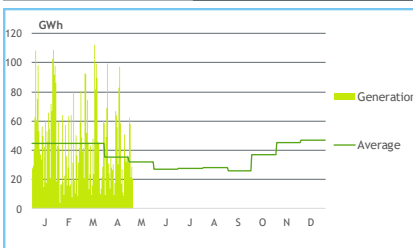
WEEKLY PEAKS



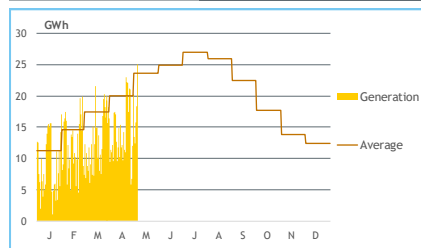
DAILY INFLOW



WIND DAILY



SOLAR DAILY



HYDRAULICITY [GWh]

	Wed.	Thu.	Fri.	Sat.	Sun.	Mon.	Tue.	Total
INFLOW	57	52	46	51	57	59	56	377
Run-of-River	34	27	24	22	18	24	31	180
Reservoirs	23	25	22	28	39	34	25	197
SPILLAGES	1	1	1	1	1	1	1	5
HYDRO STORAGE	2 961	2 964	2 966	2 973	2 981	2 983	2 975	

STORAGE

